



LIVE ENGLISH IN DUBLIN



CONTENTS

Introduction	2	Work & Study Programme	11
Meet The Team	3	Certification	12
Why Dublin.....	4	Ministay Programmes	13 - 14
What Our Students say.....	5	Teacher Training	15 - 16
Why Babel	6	Accommodation	17 - 18
Our Approach.....	7	Social & Cultural Programme	19
English For Life	8	Student Support Services	20
English For Business	9	Contact Details	Back Page
IELTS Exam Preparation	10		



Thank you for your interest in Babel Academy of English

Babel Academy of English, founded in 2017, is an independent school with two locations in the heart of Dublin City. We take great pride in the welcoming atmosphere at our school, the quality of support provided to students, and the connection that exists between students, teachers, and the entire Babel team.

Our centres are located on Eden Quay, next to Dublin's famed O'Connell Bridge, and on trendy Capel Street, a 5-minute walk away. Immersing yourself in all that Dublin has to offer is an important part of studying with us. Our students enjoy the great location and our lively social programme, including Dublin's historic landmarks and bustling nightlife, with the iconic Temple Bar a 2-minute walk away.

We have a wide range of curriculum options available, including General English Programmes, Exam Preparation, English for Specific Purposes, and Teacher Training courses.

What makes learning with us unique? Our students value the regular progress assessments and discussions with their teacher and Academic team. Our aim is for students to achieve meaningful progress, make connections and have fun.

Thank you for taking the time to explore. If you have any queries a member of the team is waiting to help. We look forward to speaking with you soon!



Check out our
testimonials here!
SCAN ME



David Ferguson
Managing Director,
Babel Academy of English



David Ferguson
Managing Director
 david@babelacademy.ie



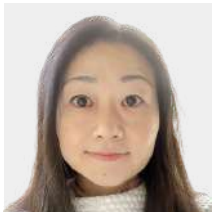
Róisín Keane
Academic Director
 roisin@babelacademy.ie



Austin Finnerty
Marketing & Development



Maria Gattari
Junior Programmes Coordinator
 maria@babelacademy.ie



Hiroko Arai
Sales Executive
 hiroko@babelacademy.ie



Luiza Meyer
LATAM Sales Executive
 luizameyer@babelacademy.ie



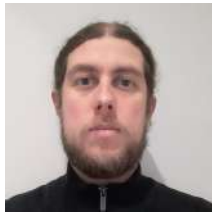
Daragh Tierney
Sales Executive
 daragh@babelacademy.ie



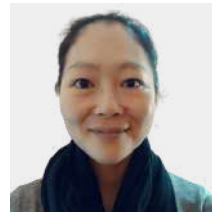
Annalisa Di Frenna
Bookings & Administration
 admin@babelacademy.ie



Andrew Grier
Student Liaison
 andrew@babelacademy.ie



Diego Rodrigues
Assistant Director of Studies
 academic@babelacademy.ie



Sara Hanesch
Assistant Director of Studies
 ados@babelacademy.ie



Alison Ferguson
Assistant Director of Studies
 alison@babelacademy.ie



Gráinne Tierney
Social Programme Coordinator
 admissions@babelacademy.ie



Junie Supe
Digital Marketing Executive
 junie@babelacademy.ie

MEET THE TEAM



General Inquiries

+353 15477665

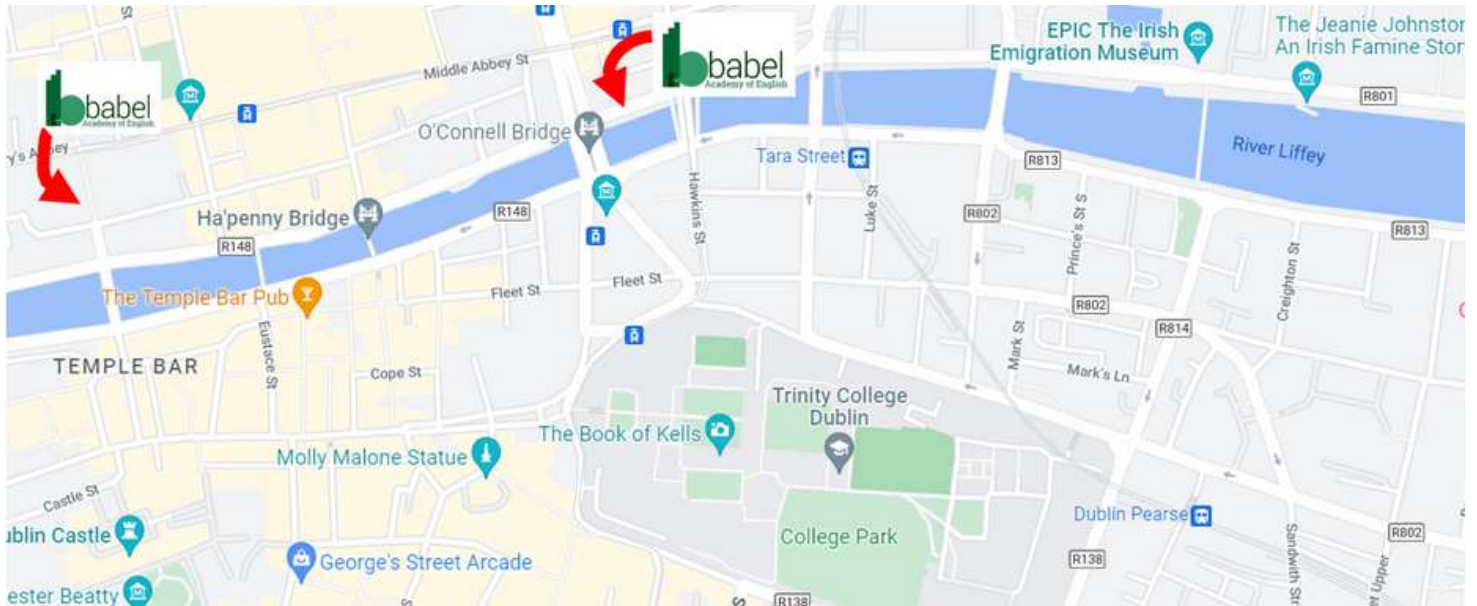
info@babelacademy.ie



Dublin

Dublin is known as the city of a thousand welcomes! It has warm, friendly people, a historic city centre and a thriving cultural scene. Dublin is an exciting and safe destination for international students. It is a capital city with everything a modern European city has to offer. Despite the 1.5 million inhabitants, it retains the atmosphere of a small town that is easy to navigate.

School Locations



WHY DUBLIN?



The lessons have been an experience you can't imagine.

Starting with the diversity of students they have, sharing with people of all ages and from all over the world was very enriching. For a moment, I stopped feeling like a student and I felt part of a family, a big multicultural family. Not to mention the staff, who does an exceptional job, always ready to help you, they will be the first smile you receive when you arrive at the school. You will broaden your cultural knowledge and you will feel part of a great family.

Jean, Panama



The staff supported me every time.

I chose "Dublin" as my first study-abroad destination. I'm really proud of this choice. When I had some anxieties, the staff supported me every time. They were very kind and they always responded to my questions and gave me a lot of proper advice immediately. So I'm sure when you need help, they will do it for you. And that's why I really enjoyed my school life without any problems and I was able to improve my English at Babel Academy.

Saki, Japan



The staff are like a family, they made us feel at home.

The school is conveniently located in the city centre, a 10-minute walk from the Spire, but even this is secondary, what really made our stay so memorable were the people working there. All the staff were most kind and helpful. They helped us in so many ways and with any minor accommodation issue.

Jordi, Spain



The school is located right at the heart of Dublin.

As a school, the location is the most important thing. Our school is located in the city centre, right at the heart of Dublin. So it was really convenient to travel around the city, even from work, even from class! So this is one of the advantages of our school.

Ugi, Mongolia

WHAT OUR STUDENTS SAY

Reasons to choose Babel Academy

Locations in the heart of Dublin city

Located on Eden Quay and Capel Street, both schools are centrally located within Dublin city centre

Spacious new premises

Our Eden Quay School won the Royal Irish Architecture Award in 2021, while our new Capel Street school hosts 12 new classrooms, along with a large student canteen and reception area

Lots of choices

Courses are available from General English Programmes to Exam Preparation, English for Specific Purposes, to Teacher Training courses



Classes are fun and Interactive

Learning while having the experience of a lifetime from your first day

Feel Part of a close-knit and fun community

A great mix of nationalities and lots of opportunities to explore Irish culture

Supportive academic team

We guide you through your learning journey

Experienced qualified teachers

Feedback and regular progress reports



Join the Babel community and live English in Dublin

WHY BABEL?



What makes us different

We believe that students reach their full potential when they feel included in, challenged by, and get enjoyment from their learning experience. We combine strong quality assurance practices and the CEFR framework in the development of our language programmes.

We help learners enhance their communicative skills, improve confidence and fluency, fulfil educational and professional ambitions, and of course, have fun.



These key elements are fundamental to our approach to teaching and learning

Communication Engaging learner-centered lessons and innovative teaching methods mean our students feel excited about classes. They have the opportunity to meet new people and share experiences in a welcoming environment.

Action Our school curriculum places a strong emphasis on authentic tasks so students learn English for real-life situations. This task-based approach greatly increases confidence using English and prepares learners for spontaneous interactions outside the classroom.

Progression The experienced and supportive academic team provide constructive and consistent feedback during lessons and throughout the learning journey. Academic guidance sessions and additional online resources help learners feel secure and motivated to meet new challenges.



OUR APPROACH

ENGLISH FOR LIFE

The Babel Academy general English course focuses on improving fluency in speaking, listening, reading and writing for authentic interactions. You gain a good foundation in grammar and functional vocabulary. Lesson activities challenge you to creatively produce language in real-life contexts.

Task-based activities, group work, presentations, and role-plays make sure that lessons are engaging. You will gain confidence in English communication for socialising, travel, daily life, work and leisure activities.



Course start

Mondays

Course duration

Minimum 1 week | Course days: Monday - Friday

Entry requirements

Age 16 + | A1-C1 level

Age 18 + | between 2nd July and 20th August

Maximum class size

15 students

Certification

Babel Academy of English certificate on course completion

Schedule Options

Morning 09.00 - 12.20 | 15 hours per week

Afternoon 13.40 - 17.00 | 15 hours per week

Intensive 09:00 - 17:00 | 30 hours per week

ENGLISH FOR BUSINESS

The course is ideal for business people who want to progress their career and improve job prospects or students who plan to pursue a career in business.

This programme combines the English for Life course with a module focused on Business communication. We help professionals develop the English language skills to communicate confidently in an international workplace. The syllabus includes contemporary business issues, case studies, participating in meetings, and communicating with colleagues and clients.



Course start

Mondays during each term

Course duration

Minimum 1 week | Course days: Monday - Friday

Entry requirements

Age 16 + | B1 level

Maximum class size

15 students

Schedule Options:

Morning 09.00 -13.30 | 20 hours per week

Afternoon 12.30 -17.00 | 20 hours per week

IELTS EXAM PREPARATION

The IELTS Academic exam is ideal for students who are preparing to enter the academic environment or need to prove their level of English for university entry or professional recognition. It reflects aspects of academic language and evaluates whether you're ready to begin training or studying.

This programme combines the English for Life course with a module totally focused on exam strategies, detailed exam practice and mock tests. You get individual feedback to help improve your performance and achieve your goals.

Participants have the option to register for the IELTS exam in Ireland through Babel Academy of English or independently at a later date.



Course start

Mondays during each term

Course duration

1-8 weeks | Course days: Monday - Friday

Entry requirements

Age 16 + | B1-C1 level

Maximum class size

15 students

Certification

Exam optional - IELTS Academic exam

Schedule Options

Morning 09.00 - 13.30 | 20 hours per week

Afternoon 12.30 - 17.00 | 20 hours per week

WORK & STUDY PROGRAMME

This course is suitable for non EU students on a work-study visa. All students follow our English for Life course ensuring they gain communication skills essential for daily interactions in an English-speaking country.

We offer courses from elementary to advanced level. Developing English language fluency, an active student social life and immersion in Irish culture, combined with the opportunity to work, makes this a rewarding international experience.



Course start

Mondays

Course duration

35 weeks

(including 25 weeks tuition + 10 weeks holiday)

Course days

Monday - Friday

Entry requirements

Age 18 + | A1-C1 level

Maximum class size

15 students

Certification

(See next page)

Additional

Job seeking support and advice including CV writing and interview preparation

Advice about practical life in Ireland

Schedule Options

Morning 09.00 - 12.20 | 15 hours per week

Afternoon 13.40 - 17.00 | 15 hours per week

CERTIFICATION

Certification

Students prepare for their chosen end of programme external exam. Exam options include TIE (Test of Interactive English) and IELTS (accepted for university applications and professional membership).

+ IELTS Exam Preparation

This programme combines the English for Life course with the 8 weeks IELTS Exam Preparation module. Students are registered for the IELTS exam at the end of their programme.

Entry level Minimum B1

Course start Mondays

Course schedule includes

8 weeks IELTS Exam Preparation 12:30 - 13:30



MINI STAY PROGRAMMES

KEY PRIORITY COURSES FOR STUDENT GROUPS

Babel Academy of English Erasmus+ programme for student groups incorporates the key priorities for 2021-2027. Students explore Ireland's cultural and historical heritage through lesson workshops and their activity programme.

Choose from the following key priority programme options:

- European Citizenship
- Digital Skills
- Environment and Sustainability
- Inclusion and Diversity



Social Programme Sample

Time	Mon	Tue	Wed	Thu	Fri	Sat	Sun
09:00-12:20	Lessons						
13:20-17:00	Excursion Jeanie Johnston 	Excursion Malahide Castle 	Excursion EPIC Museum 	Excursion National Gallery of Ireland 	Excursion Dublinia Viking Museum 	Day Trip Glendalough 	Day Trip Cliffs of Moher 
18:00-19:00	Dinner						

INTERNSHIPS

The programme is for Students in Vocational Education and Training schools, third level students and young professionals who want to gain experience in an English-speaking workplace.

Features:

Experience working in an industry of interest and make professional contacts for the future

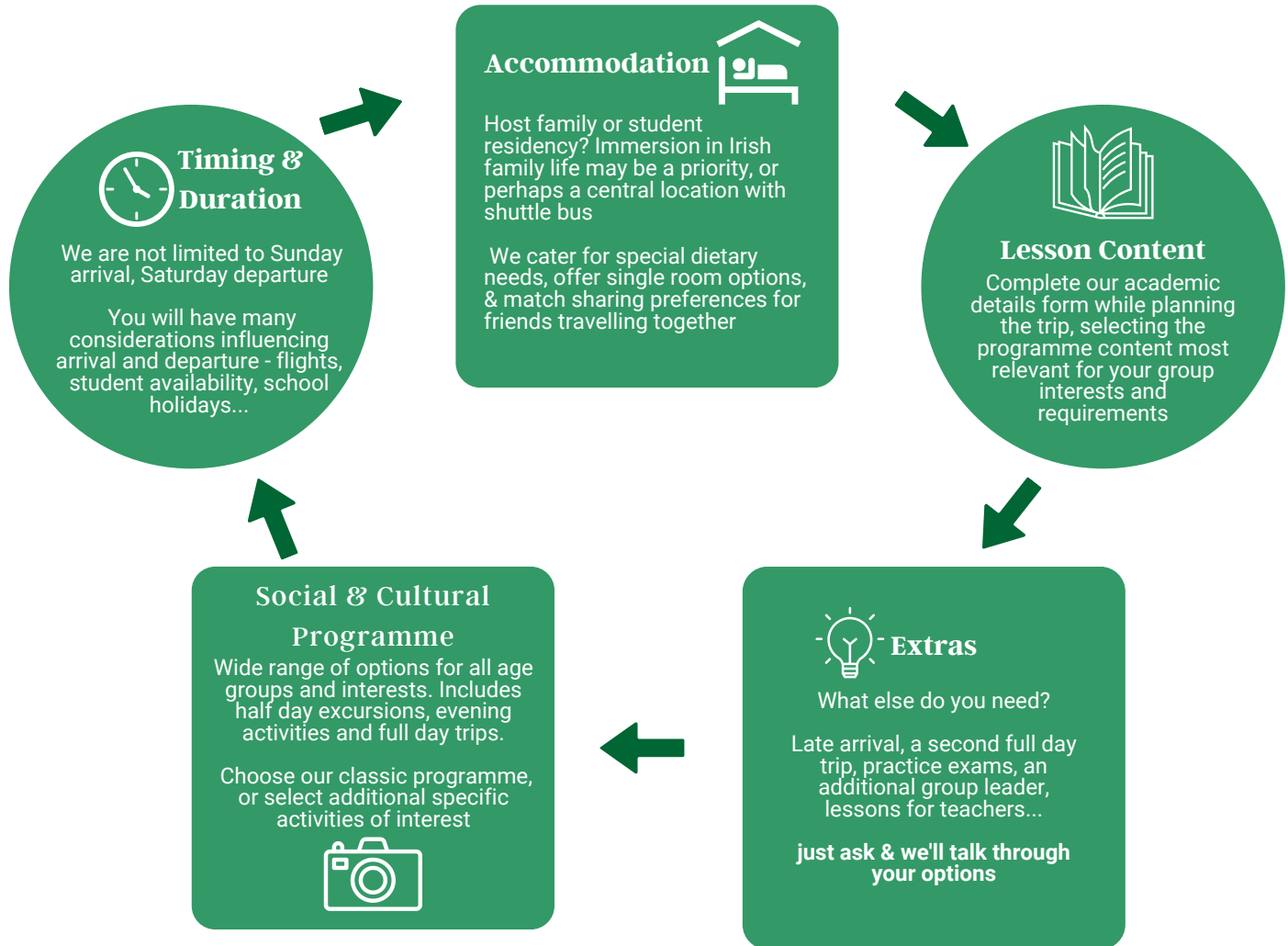
Develop English fluency and improve confidence communicating with colleagues

Learn about organisational systems and procedures

MINI STAY PROGRAMMES

CHOICE AND FLEXIBILITY

You can select from each of the following categories to create a tailored package for your group:



PACKAGE OPTIONS

TEACHER TRAINING

The Babel Academy Teacher Training programme is for teachers of English or CLIL to primary, secondary or third level learners. Our courses are aimed at teachers who want to improve their knowledge and skills while experiencing Irish culture, meeting new people, developing contacts and enhancing your international colleague network.

Social events and cultural excursions give teachers a chance to enjoy Irish culture themselves and socialise with colleagues. Take the opportunity to refresh your perspective of teaching and learning through immersion and lively participation in our engaging programmes.

Features

- Increase confidence and fluency communicating through English
- Interactive and engaging lessons with experienced tutors
- Practical activities and ideas for language lessons
- Team work and group tasks promoting peer support and idea-sharing
- Immersion in Irish life - a memorable cultural experience

Tuition

25 hours per week

Days

Monday to Saturday | Morning and Afternoon

Cultural Programme

Engaging Irish cultural programme including excursions

Minimum duration

1 week

Minimum language level

A1 to C1 depending on specific course content



TEACHER TRAINING

Programme Options

Erasmus+ funded programmes - choose one option per week:

- **Technology in the classroom:** Improve your knowledge of digital tools for teaching and learning. Get useful tips and practice incorporating digital skills in the classroom environment.
- **Language, Literature and Culture:** Enhance your knowledge of Irish culture. Explore classic texts and discuss newly-found interests. Delve into language and culture from a literary perspective.
- **Mindfulness in the classroom:** Learn and practice mindfulness techniques. Gain a better understanding of mindfulness in practice. Develop your skills in dealing with the day-to-day challenges teachers face.
- **English language skills for teachers:** Improve your communicative skills and English language fluency. Gain confidence using English in the classroom.
 - **Elementary** - suitable for teachers with A1 to A2 language level.
 - **Intermediate** - suitable for teachers with B1 to B1+ language level.
 - **Advanced** - suitable for teachers with B2 to C1 language level.

Erasmus+ teacher training course dates:

Easter | From March 25 to April 13 2024

Summer | From July 22 to Aug 17 2024

Autumn | From October 21 to November 2 2024

Erasmus+ Applications

| Our Legal Name: Babel Academy of English (Ireland)

| OID: E10140856 | PIC: 908700948



ACCOMMODATION

Host Family

Staying with a host family is a great way to experience a new culture and practice your English. Our host families are friendly and welcoming, many with years of experience hosting international students. They will give you tips and local knowledge about the Dublin area.

Options

Single room

Shared room (group bookings)

Features

- Experience Irish family life
- Half-board: 2 meals included – breakfast and evening meal
- Convenient access to Dublin city centre via public transport



*Airport transfers available for all accommodation options
*Unlimited Dublin city transport passes can be arranged and available on arrival at your accommodation

ACCOMMODATION

Student Residency

Modern student residency in a university campus environment. Our student apartments consist of a private en-suite room with study area, plus shared kitchen and living space.

Options

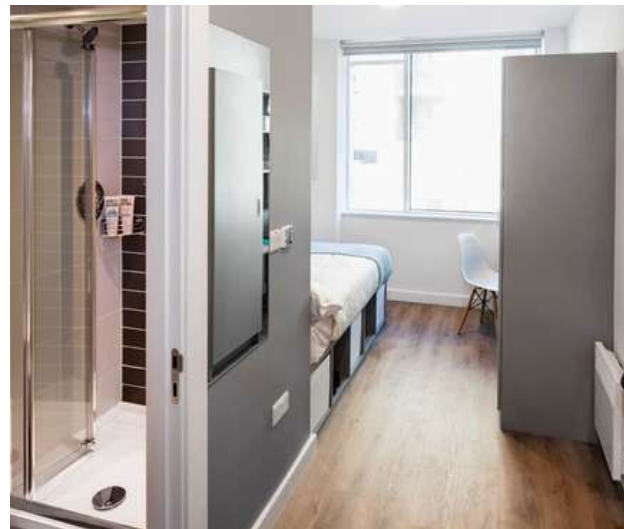
Single en-suite room

Features

- Self-catering
- 24/7 security onsite
- Wi-Fi
- Dublin city centre location

Facilities include

Gym, laundry, restaurant and café options adjacent



SOCIAL & CULTURAL

The best way to learn a language is to speak it!





Language learning does not stop outside the classroom. We believe that immersing yourself in Irish culture and social life is a crucial part of your learning experience.

With the Babel Academy activity programme you get to know students from all over the world, experience the best of what Ireland has to offer and above all, have fun and improve your English in a social setting. From the world-famous Cliffs of Moher to the Guinness Store house, Babel Academy has something for all tastes. And of course there are the famous pubs of Dublin city and Temple Bar, on our doorstep!

Activity options vary weekly and include afternoon excursions, evening events, and weekend day trips.



Sample Programme

Monday	Tuesday	Wednesday	Thursday	Friday	Saturday
National Gallery 	Free Time	River Liffey Cruise 	Free Time	Collins Barracks 	Full Day Trip: Bray Loop Walk 

STUDENT SUPPORT SERVICES

All our students can avail of

- Friendly and accessible staff available to offer advice and support
- Internship support service
- Job seeking support and advice including CV writing and interview preparation
- Library service with books available for students to borrow
- Online study materials
- Support with exam registration and preparation
- Accommodation booking and support service
- Airport transfers
- Travel passes for bus, train and tram services
- Emergency telephone service outside of office hours



Contact

info@babelacademy.ie

+353 1 5477665

www.babelacademy.ie

Address

Babel Academy of English

2nd Floor Astor Hall, 4-8 Eden Quay,

D01N5W8, Ireland



LIVE ENGLISH IN DUBLIN