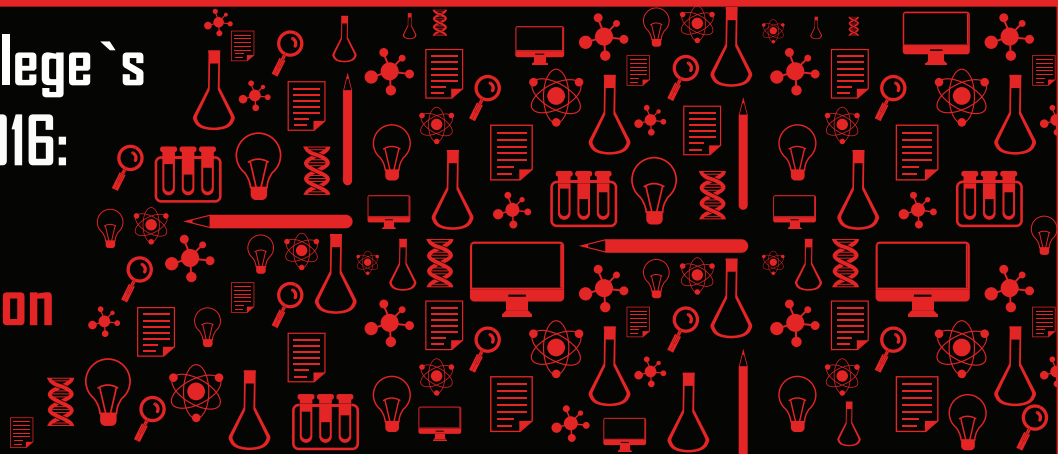


# Tartu Health Care College`s International Week 2016: Applied Research and Borderless Cooperation 21.-25.11.2016



## Ongoing applied research studies in Tartu Health Care College:

**2015-2018.** Speciality and Curriculum of Environmental Health in Europe.

**2015-2016.** Midwives' perceptions of, attitudes to, experiences and techniques in case of normal delivery in delivery wards in hospital in Estonia.

**2014-2020.** Compiling methodological guidelines and a manual for biomedical laboratory scientists' study labs.

**2014-2016.** Perceptions of professionalism among qualified radiographers and radiography students.

**2013-2018.** Use of child car safety equipment in Estonia.

**2013-2016.** Forming, shaping and assessing nursing students' caring attitude.

**2013-2018.** Prevalence of *B. burgdorferi sensu lato* and different genotypes in ticks collected from counties in Estonia.

**2013-2016.** Gathering data for and a comparative analysis of patient radiation dosimetry optimisation in radiography.

**2013-2016.** Impact of coffee and vegetarian diet to lab markers of blood and bone density.

**2012-2018.** Assessment of the 3-month effect of support taping aid to correcting 5-to 8-year-olds' *genu valgum* and longitudinal foot arch.

**2012-2017.** Patient point-of-care testing in family doctors' (2012-2013), hospital (2013-2014) and South-Eastern care facilities practice (2015-2017) in Estonia.

**2012-2018.** Prevalence of enterobiasis in kindergarten children. Kindergarten children in Jõgevamaa (2012-2013), in Viljandimaa and Tartumaa (2013-2014), in Raplamaa (2015-2016), in Harjumaa (2015-2017).

For further information and the results and overviews of completed research studies please visit: <http://www.nooruse.ee/eng/collaboration/research/>